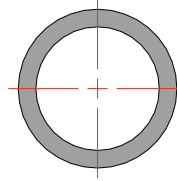
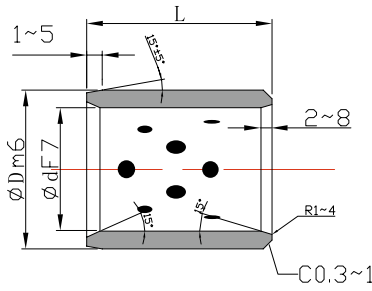


# SPB 銅合金自潤襯套



軸心使用建議  
一般高荷重用:d8  
一般輕荷重用:c7  
高精度使用:d7

產品標示法: SPB- $d$ \* $D$ \* $L$   
(SPB-內徑\*外徑\*長度)

Ød	ØD	L <sup>-0.1</sup> / <sub>-0.3</sub>																		單位: mm		
		8	10	12	15	16	20	25	30	35	40	45	50	60	70	80	100	120	130		140	150
8	+0.028 +0.018	12	+0.018 +0.007	✓	✓	✓	✓															
10	+0.028 +0.018	14	+0.018 +0.007	✓	✓	✓	✓	✓														
12	+0.034 +0.016	18	+0.018 +0.007		✓	✓	✓	✓	✓	✓												
13	+0.034 +0.016	19	+0.021 +0.008		✓	✓	✓	✓														
14	+0.028 +0.018	20	+0.021 +0.008		✓	✓	✓	✓	✓	✓												
15	+0.028 +0.018	21	+0.021 +0.008		✓	✓	✓	✓	✓	✓												
16	+0.034 +0.016	22	+0.021 +0.008		✓	✓		✓	✓	✓	✓	✓										
18	+0.034 +0.016	24	+0.021 +0.008				✓	✓	✓	✓	✓	✓	✓	✓								
20	+0.041 +0.020	28	+0.021 +0.008				✓	✓	✓	✓	✓	✓	✓									
20	+0.041 +0.020	30	+0.021 +0.008					✓	✓	✓	✓	✓	✓	✓								
25	+0.041 +0.020	33	+0.025 +0.009					✓	✓	✓	✓	✓	✓	✓								
25	+0.041 +0.020	35	+0.025 +0.009					✓	✓	✓	✓	✓	✓	✓	✓							
30	+0.041 +0.020	38	+0.025 +0.009						✓	✓	✓	✓	✓	✓	✓							
30	+0.041 +0.020	40	+0.025 +0.009						✓	✓	✓	✓	✓									
31.5	+0.050 +0.025	40	+0.025 +0.009						✓	✓	✓	✓	✓	✓	✓							
35	+0.050 +0.025	44	+0.025 +0.009							✓	✓	✓	✓	✓	✓							
35	+0.050 +0.025	45	+0.025 +0.009								✓	✓	✓	✓	✓	✓						
40	+0.050 +0.025	50	+0.025 +0.009						✓	✓	✓	✓	✓	✓	✓	✓	✓	✓				
40	+0.050 +0.025	55	+0.030 +0.011						✓	✓	✓	✓	✓	✓	✓	✓						
45	+0.050 +0.025	55	+0.030 +0.011							✓	✓	✓	✓	✓	✓							
45	+0.050 +0.025	56	+0.030 +0.011								✓	✓	✓	✓	✓							
45	+0.050 +0.025	60	+0.030 +0.011								✓	✓	✓	✓	✓	✓	✓					
50	+0.050 +0.025	60	+0.030 +0.011								✓	✓	✓	✓	✓	✓	✓	✓				
50	+0.050 +0.025	62	+0.030 +0.011								✓	✓	✓	✓	✓	✓						
50	+0.050 +0.025	65	+0.030 +0.011									✓	✓	✓	✓	✓	✓	✓				
55	+0.060 +0.030	70	+0.030 +0.011									✓	✓	✓	✓	✓	✓	✓				
60	+0.060 +0.030	74	+0.030 +0.011									✓	✓	✓	✓	✓	✓	✓				
60	+0.060 +0.030	75	+0.030 +0.011									✓	✓	✓	✓	✓	✓	✓	✓			
63	+0.060 +0.030	76	+0.030 +0.011																			
65	+0.060 +0.030	80	+0.030 +0.011																			
70	+0.060 +0.030	85	+0.035 +0.013																			
70	+0.060 +0.030	90	+0.035 +0.013																			
75	+0.060 +0.030	90	+0.035 +0.013																			
75	+0.060 +0.030	95	+0.035 +0.013																			
80	+0.060 +0.030	96	+0.035 +0.013																			
80	+0.060 +0.030	100	+0.035 +0.013																			
90	+0.071 +0.026	110	+0.035 +0.013																			
100	+0.071 +0.026	120	+0.035 +0.013																			
110	+0.071 +0.026	130	+0.040 +0.015																			
120	+0.071 +0.026	140	+0.040 +0.015																			
125	+0.083 +0.043	145	+0.040 +0.015																			
130	+0.083 +0.043	150	+0.040 +0.015																			
140	+0.083 +0.043	160	+0.040 +0.015																			
150	+0.083 +0.043	170	+0.040 +0.015																			
160	+0.083 +0.043	180	+0.040 +0.015																			

銅自潤軸承